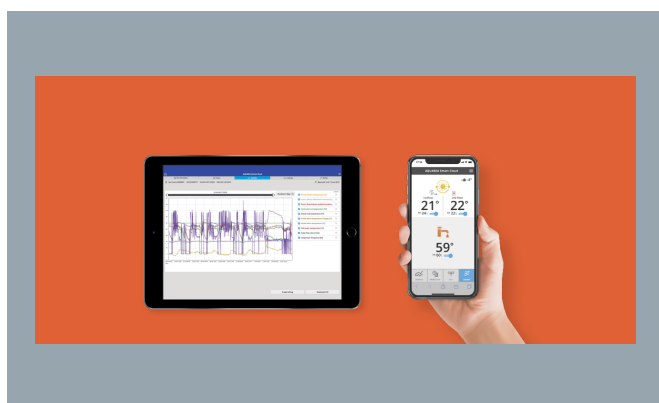


## KIT-WXC09H3E5 (WH-SXC09H3E5 + WH-UX09HE5)



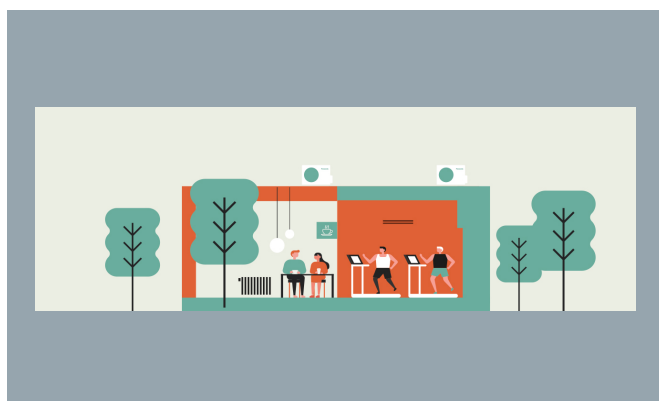
## A hőszivattyú a külső levegő hőenergiáját hasznosítja az épület fűtésére.



**Aquarea Service Cloud. Szabályozás a mai és jövőbeni igényekhez**

[VÉGFELEHASZNÁLÓK SZÁMÁRA](#)

[TELEPÍTÉST VÉGZŐ SZAKEMBEREK / KARBANTARTÓK RÉSZÉRE](#)



**Aquarea kereskedelmi megoldások a maximális megtakarítás eléréséhez**

[TOVÁBBI INFORMÁCIÓK](#)

<b>Aquarea H generációs T-CAP split, egyfázisú / háromfázisú • R410A</b>		
		<b>9 kW</b>
<b>Kit</b>		<b>KIT-WXC09H3E5</b>
Heating capacity (A +7°C, W 35°C)	kW	9,00
COP (A +7°C, W 35°C)		4,84
Heating capacity (A +7°C, W 55°C)	kW	9,00
COP (A +7°C, W 55°C)		2,94
Heating capacity (A +2°C, W 35°C)	kW	9,00
COP (A +2°C, W 35°C)		3,59
Heating capacity (A +2°C, W 55°C)	kW	9,00
COP (A +2°C, W 55°C)		2,21
Heating capacity (A -7°C, W 35°C)	kW	9,00
COP (A -7°C, W 35°C)		2,85
Heating capacity (A -7°C, W 55°C)	kW	9,00
COP (A -7°C, W 55°C)		2,02
Cooling capacity (A 35°C, W 7°C)	kW	7,00
EER (A 35°C, W 7°C)		3,17
Cooling capacity (A 35°C, W 18°C)	kW	7,00
EER (A 35°C, W 18°C)		5,19
Heating average climate. Seasonal energy efficiency (W 35°C / W 55°C)	ηs %	181 / 130
Heating average climate. Seasonal energy efficiency (W 35°C / W 55°C)	SCOP	4,60 / 3,33
Heating average climate. Energy class (W 35°C / W 55°C) (1)	A+++ to D	A+++ / A++
Heating warm climate. Seasonal energy efficiency (W 35°C / W 55°C)	ηs %	235 / 158
Heating warm climate. Seasonal energy efficiency (W 35°C / W 55°C)	SCOP	5,95 / 4,03
Heating warm climate. Energy class (W 35°C / W 55°C) (1)	A+++ to D	A+++ / A+++
Heating cold climate. Seasonal energy efficiency (W 35°C / W 55°C)	ηs %	160 / 125
Heating cold climate. Seasonal energy efficiency (W 35°C / W 55°C)	SCOP	4,08 / 3,20
Heating cold climate. Energy class (W 35°C / W 55°C) (1)	A+++ to D	A++ / A++
<b>Indoor unit</b>		<b>WH-SXC09H3E5</b>
Indoor sound pressure (Heat)	dB(A)	33
Indoor sound pressure (Cool)	dB(A)	33
Indoor dimension (Height)	mm	892
Indoor dimension (Width)	mm	500
Indoor dimension (Depth)	mm	340
Indoor net weight	kg	43

<b>Aquarea H generációs T-CAP split, egyfázisú / háromfázisú • R410A</b>		<b>9 kW</b>
Water pipe connector	Inch	R 1¼
A class pump (Number of speeds)		Variable Speed
A class pump (Input power Min)	W	32
A class pump (Input power Max)	W	102
Heating water flow (ΔT=5 K, 35°C)	L/min	25,80
Capacity of integrated electric heater	kW	3,00
Indoor recommended fuse	A	30 / 30
Recommended cable size, supply 1	mm²	3 x 4,0 or 6,0
Recommended cable size, supply 2	mm²	3 x 4,0
<b>Outdoor unit</b>		<b>WH-UX09HE5</b>
Outdoor sound power part load (Heat) (3)	dB(A)	66
Outdoor sound power full load (Heat)	dB(A)	68
Outdoor sound power full load (Cool)	dB(A)	67
Outdoor dimension (Height)	mm	1340
Outdoor dimension (Width)	mm	900
Outdoor dimension (Depth)	mm	320
Outdoor net weight	kg	101
Refrigerant (R410A) / CO2 Eq.	kg / T	2,85 / 5,951
Pipe diameter (Liquid)	Inch (mm)	3/8 (9,52)
Pipe diameter (Gas)	Inch (mm)	5/8 (15,88)
Pipe length range	m	3 ~ 30
Elevation difference (in/out)	m	30
Pipe length for additional gas	m	10
Additional gas amount	g/m	50
Operation range (Outdoor ambient)	°C	-28 ~ +35
Water outlet (Heat)	°C	20 ~ 60
Water outlet (Cool)	°C	5 ~ 20

## Kiegészítő termékek

